

Joydesk

Business Edition

Enjoy the power of web-based collaboration and wireless e-mail in one convenient and affordable solution.

What makes Joydesk different from other Intranet solutions? You have the control. You create your own secure, purely web-based Intranet environment. Now you can easily send e-mail, share documents, post public announcements, create group calendars or build employee directories without leaving the security of your Intranet.

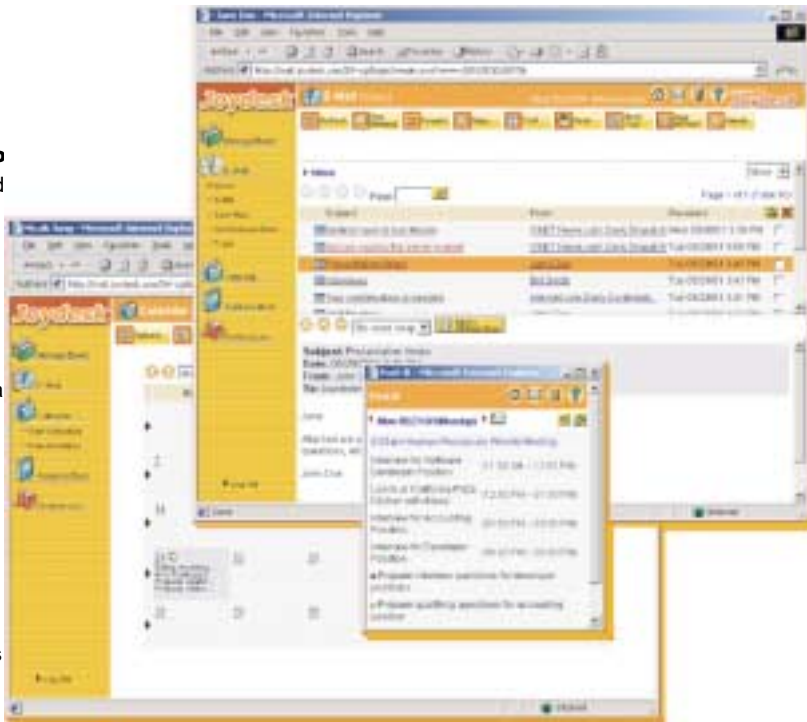
With Joydesk's robust features and hassle-free installation and maintenance, you can create an instant Intranet accessible anytime, anywhere and on any device.

The Joydesk Business Edition is ideal for small to medium sized businesses, corporate field offices, schools, non-profit organizations and small offices/home offices.

Benefits

Break the ties to computer with Joydesk Business Ed

Joydesk Business Ed to access your most important business data, including e-mail, calendar, address book and task list through any device, anytime. As a fully integrated suite of web-based groupware applications, the Joydesk Business Edition provides collaborative functions through a web browser such as Internet Explorer or Netscape Navigator.



Flexibility for a mobile office

In today's fast-paced mobile world, heightened communication and real-time company-wide collaboration are crucial in helping you increase your bottom line. Joy2Go! extends the Joydesk Business Edition with wireless and sync solutions. Joy2Go! Wireless turns your Joydesk office into a mobile office with your e-mail, task list, calendar and address book never as far away as your mobile device. Joy2Go! Sync allows you to synchronize your important Joydesk contact, address and tasklist information with your personal digital assistant (PDA) or desktop PIM application such as Microsoft Outlook.

POP3 or IMAP4 server add-on

Tap into your Joydesk e-mail or browse offline without changing the e-mail client you already know.

Gain competitive advantage with Joydesk's collaboration features

Shared resources such as calendar, address book, resource availability, task delegation and message board allow any working group to increase communication, enhance remote collaboration and streamline project management.

Save time and money

Smaller businesses simply cannot afford dedicated IT personnel to maintain the Intranet. Install Joydesk once on your server for an end-to-end software solution including a database and a built-in mail server. With little to no maintenance required, the benefit of saving time and money will be immediate.

Security

With password protection and encryption, you control the security access of each user while keeping the rest of the world out.

"Joydesk allows easier access to our e-mail and does not restrict communication to an 8 hour day."

– John McGovern, Filtration

Group



VirtualTek Corporation

VirtualTek Corporation provides the powerful software infrastructure that enables wireless and web-based messaging and workgroup collaboration software solutions designed for small businesses, corporate Intranets, ISPs, wireless service providers and Web hosting companies.

Download a free 30-day trial version of Joydesk or test drive Joydesk and Joy2Go! with a free 60-day account available at www.joydesk.com. Founded in 1997, VirtualTek is a privately held corporation headquartered in Bellevue, Wash. with sales throughout North and South America, Asia, Europe and Central America.

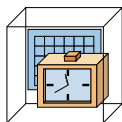
170 120th Avenue NE, Suite 103
Bellevue, Washington 98005
Tel: 425.450.9494
Fax: 206.374.2855

Joydesk Business Features



Web-based E-mail

- ♦ Fully-featured web-based e-mail
- ♦ Mail filter feature
- ♦ Consolidate external mail accounts
- ♦ Auto signature
- ♦ Automatic out-of-office e-mail response
- ♦ Spell checker



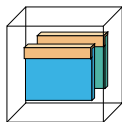
Group or Personal Calendar

- ♦ Single or recurring appointments or invitations
- ♦ Reminders for set appointments and invitations
- ♦ Shared calendar to view user and resource availability
- ♦ Delegate tasks
- ♦ E-mail notifications for invitations
- ♦ Personal task list



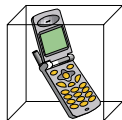
Group or Personal Address Book

- ♦ Personal contact list or employee directories
- ♦ User directories and group lists
- ♦ Consolidate contact information into one centralized database
- ♦ Publish contact information for the entire group



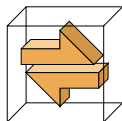
Group Message Board

- ♦ Exchange and track ideas into threaded discussions and forums
- ♦ Make public announcements
- ♦ Post and share documents



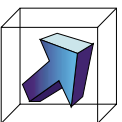
Joy2Go! Wireless

- ♦ Access your Joydesk account with your web-enabled mobile phone
- ♦ Receive, compose and send e-mail
- ♦ Receive urgent notifications
- ♦ Receive alerts for incoming e-mail
- ♦ Check or create a new schedule or contact information



Joy2Go! Sync

- ♦ Synchronize your Joydesk calendar, address book and task list to your PDA or your desktop PIM application such as Microsoft Outlook



Joy2Go! POP

- ♦ Have the freedom to use a POP3 or IMAP4 e-mail client such as Outlook or Eudora to access your Joydesk e-mail

System Requirements

Server O/S for Business Edition

- ♦ Red Hat 6.2/7.1
- ♦ Cobalt Qube3

Minimum Server Requirements:

- ♦ 200 MHz
- ♦ 128 MB RAM
- ♦ 500 MB available hard disk
- ♦ Internet connection

Client requirements for Joydesk:

Windows

- ♦ Client O/S: Microsoft Windows 9.x/ NT/ 2000
- ♦ Browser: Microsoft Internet Explorer 4.x-5.5, Netscape Navigator 4.7x, any browser supporting html 3.2 and JavaScript

Linux

- ♦ Client O/S: Red Hat Linux
- ♦ Browser: Any browser supporting html 3.2 and JavaScript

Other Supported Clients

- ♦ Client O/S: Macintosh
- ♦ Browser: Microsoft Internet Explorer 4 & 4.5

Wireless

- ♦ Internet-ready wireless device with HDML or WML WAP browser

Technical Support

30-day free support and upgrades with continuing e-mail support. Extended support packages available for purchase.